

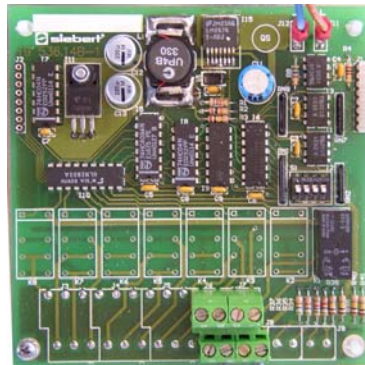
I/O Subassembly

GB0.1 – 19/12/2002

Function

By using the I/O subassembly, displays of the series S302 and SX302 are extended by up to max. eight potential-free outputs depending on the version (relay switch contacts).

I/O subassembly



DIP switch

Terminal assignment (version with 1 relay)

NO1: Closure connects
 NC1: Break contact
 CO1: Center contact
 M: Mass (connected with the negative connection of the power supply)
 P: Positive power supply (connected with the positive connection of the power supply). The connection P can be connected individually for each relay with its center contact using the soldering jumpers on the rear.

Switching function

Alternatively to the purely static activation of the relays, a wiping function can be selected via the DIP switch. A once activated relay stays active during the desired time and then switches off automatically. Therefore, explicit switching-off is not longer required.

The wiping function is only available for the first two relays.

DIP 1 2 3 4



*Factory settings

DIP1	DIP2	
OFF	OFF	→ static
ON	OFF	→ 1 s
OFF	ON	→ 2 s
ON	ON	→ 4 s

DIP3/DIP4: without function

Relay activation following control commands:

If only one relay is available on the I/O subassembly, it may be activated using the

- <ESC>QA0 Switching output QA (relay 1) not activated
- <ESC>QA1 Switching output QA (relay 1) activated

The relay commands are not effective before ending of the telegram.